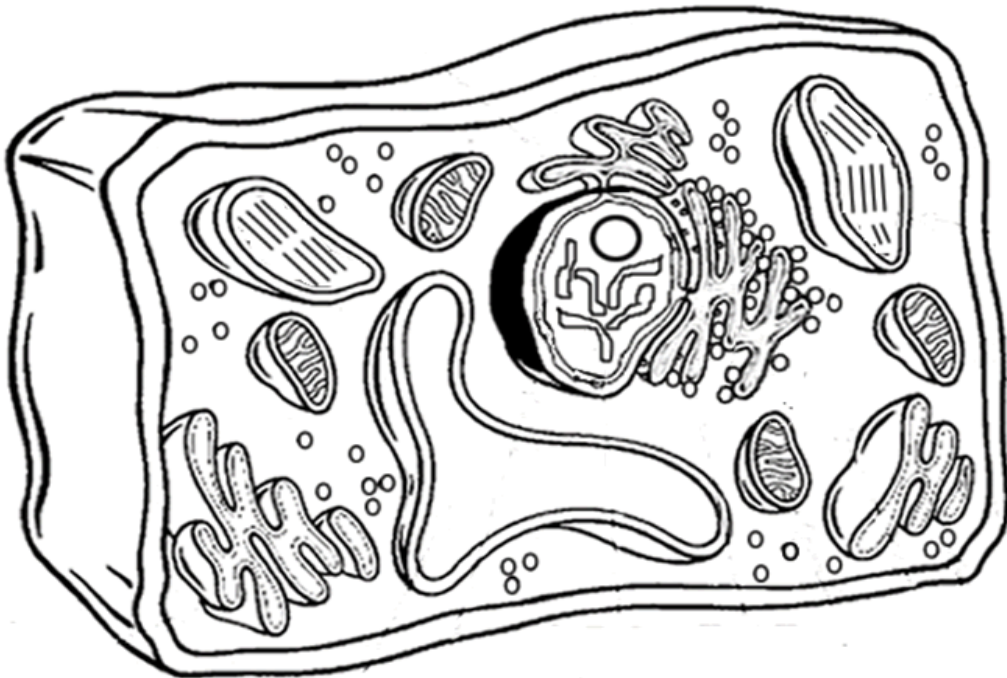


Name: \_\_\_\_\_ Date: \_\_\_\_\_ Period: \_\_\_\_\_

## Biology Chapter 7-2 Plant Cell Coloring

I. Directions: Color each part of the cell its designated color.

- |   |  |  |
|---|--|--|
| <input type="checkbox"/> Cell Membrane (orange) | <input type="checkbox"/> Cell Wall (dark green)              | <input type="checkbox"/> Ribosome (purple)         |
| <input type="checkbox"/> Nucleoplasm (yellow)   | <input type="checkbox"/> Nucleolus (brown)                   | <input type="checkbox"/> Cytoplasm (white)         |
| <input type="checkbox"/> Mitochondria (red)     | <input type="checkbox"/> Chloroplasts (light green)          | <input type="checkbox"/> Golgi Apparatus (dk blue) |
| <input type="checkbox"/> Vacuole (lt. Blue)     | <input type="checkbox"/> Smooth Endoplasmic Reticulum (pink) |  |
| <input type="checkbox"/> Chromatin (gray)       | <input type="checkbox"/> Rough Endoplasmic Reticulum (pink)  |  |



### Analysis

1. Name two things found in a plant cell that are not found in an animal cell.
2. How does the shape of a plant cell differ from that of an animal cell?
3. What is the function of the chloroplasts?
4. What is the function of the vacuole?

# Biology Chapter 7-2 Animal Cell Coloring

II. Directions: Color each part of the cell its designated color.

Cell Membrane(light brown)

Cytoplasm (light yellow)

Nucleoplasm (pink)

Nuclear Membrane(dark brown)

Nucleolus (black)

Golgi Apparatus (pink)

Flagella (red/blue striped)

Rough Endoplasmic Reticulum (dark blue)

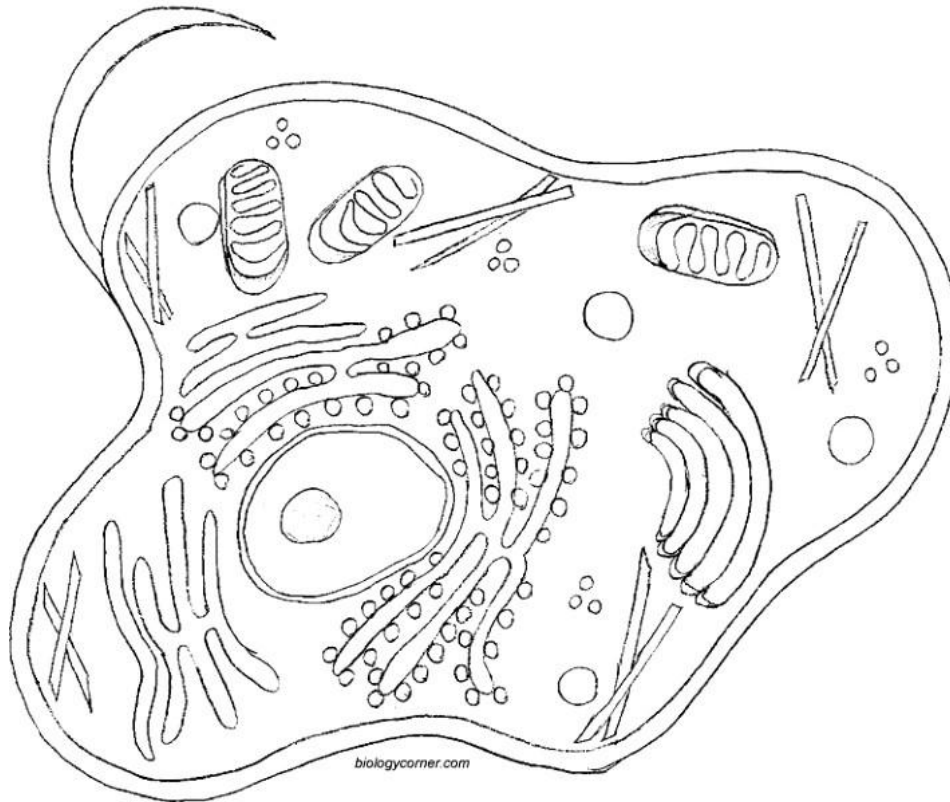
Smooth Endoplasmic Reticulum( light blue)

Mitochondria (orange)

Lysosome (purple)

Microtubules (dark green)

Ribosome (red)



II. Complete the table for the following cell parts which briefly describe the function of the cell parts.

| Cell Part             | Function | Is similar to? |
|-----------------------|----------|----------------|
| Cell Membrane         |          |                |
| Endoplasmic Reticulum |          |                |
| Ribosome              |          |                |
| Golgi Apparatus       |          |                |
| Lysosome              |          |                |
| Microtubule           |          |                |
| Mitochondria          |          |                |
| Nucleus               |          |                |